

Campbell's Farewell to Redcastle

March

J McHaffie

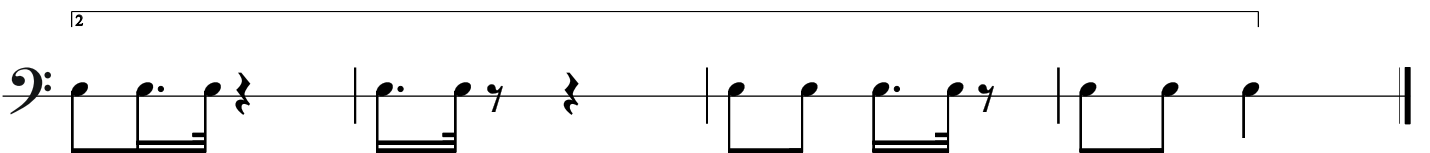
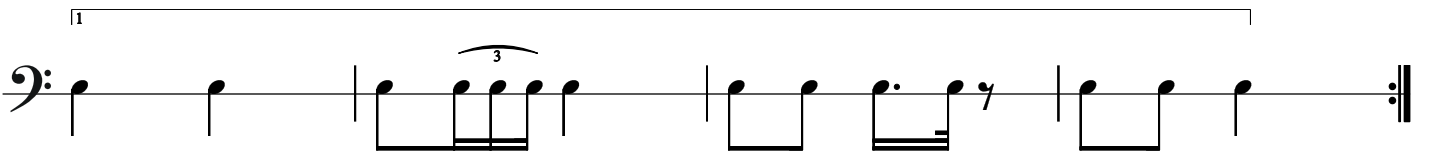
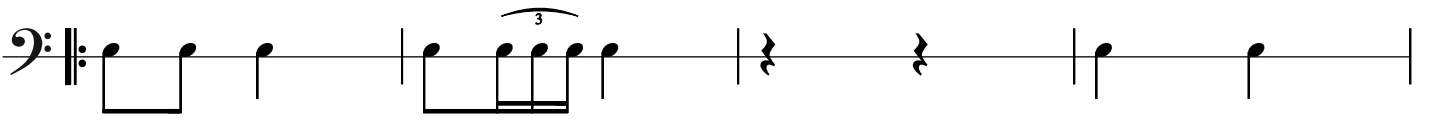
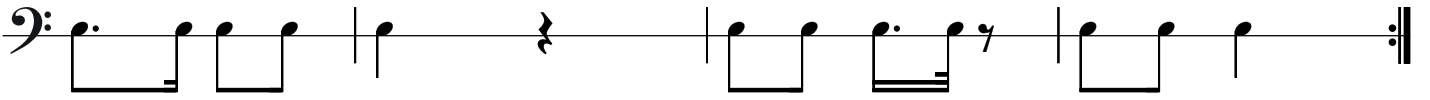
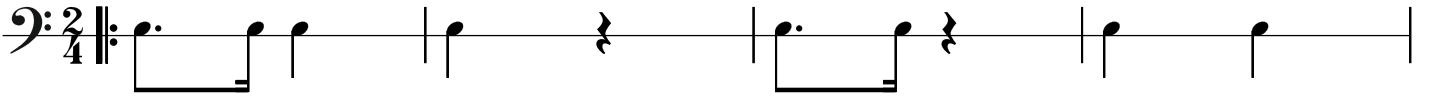
1

2

Campbell's Farewell to Redcastle

March

Tenor



Campbell's Farewell to Redcastle

March

Bass

First line of bass notation, starting with a treble clef and a 2/4 time signature. It contains a series of notes: a quarter note, an eighth note beamed to a quarter note, a quarter note, a quarter note, a quarter note, a quarter rest, a quarter note, and a quarter note.

Second line of bass notation. It contains a quarter note, a quarter rest, a quarter note, a quarter note, a quarter note, a quarter rest, a quarter note, an eighth note beamed to a quarter note, and a quarter note.

Third line of bass notation. It contains a quarter note, a quarter note, a quarter note, a quarter note, a quarter note, a quarter rest, a quarter note, and a quarter rest.

Fourth line of bass notation, marked with a first ending bracket (1). It contains an eighth note beamed to a quarter note, a quarter note, a quarter rest, a quarter note, a quarter note, a quarter rest, an eighth note beamed to a quarter note, and a quarter note.

Fifth line of bass notation, marked with a second ending bracket (2). It contains a quarter note, a quarter rest, a quarter note, a quarter note, a quarter note, a quarter rest, an eighth note beamed to a quarter note, and a quarter note.