

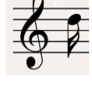


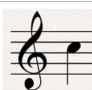


PIPING & DRUMMING QUALIFICATIONS BOARD

PRACTICE CHANTER SCQF LEVEL 2

Time Allowed – 1 Hour

Music notation – The Unit:-

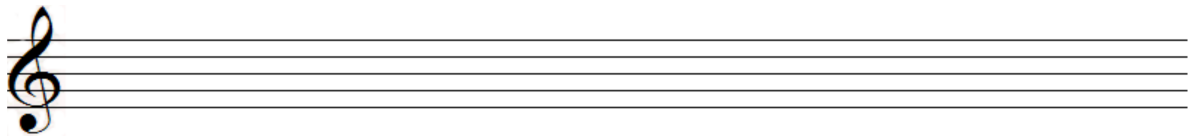
1. Complete the table below giving the **Pitch Name** (letter name), the **Duration Name** and the **Duration Value** of the Notes provided. An example of the answer requirements is provided in the first line of the table.

Note	Pitch Name	Duration Name	Duration Value
	D	Quaver	Eighth note (or 1/8)
			
			
			
			
			
			
			
			

/12

2. On the blank staff below, write pitches of the following durations.

B minim ((half note - (1/2))
High G quaver ((eighth note - (1/8))
D crotchet ((quarter note) - (1/4))
F demi-semi-quaver ((thirty-second note – 1/32))
Low A semi-quaver ((sixteenth note – 1/16))
E semi-breve ((whole note – (1))
C quaver (eighth note – (1/8))
High A crotchet (quarter note – (1/4))



/8

3. Explain how the duration of a note is affected when a dot is added **after it**. Provide an example showing the effect to the duration note you have chosen when the dot is added.

For example: A musical notation example showing a dotted quarter note (a vertical stem with a flag and a dot) followed by an equals sign, then a quarter note (a vertical stem with a flag) followed by a plus sign and an eighth note (a vertical stem with a flag).

/2

4. Explain how the duration of a note is affected when a tail is added. Provide an example showing what would happen to the original note you have chosen when the tail is added.

For example: A musical notation example showing a quarter note (a vertical stem with a flag) followed by a plus sign and the word 'tail', followed by an equals sign and an eighth note (a vertical stem with a flag).

/2

5.

- a) Draw a stave.
- b) Draw the Treble Clef in the correct position
- c) Divide the stave into four equal bars using bar lines.
- d) Insert, into each bar, note(s) or note groups that are equal to the value of two crotchets (quarter notes). Each Bar should contain different examples.

/8

6. Draw on the staff below how you would indicate a line of music was to be repeated.



/2

Writing music in Simple Time – The Unit

7. Copy the following piece of music onto the blank staff provided below:



Practice Chanter maintenance - The Unit – an oral examination conducted during the practical activity.

8. Oral Maintenance activity – This section will be completed by the Assessor based on the Oral Examination activity conducted in the practical session:-

/12

TOTAL /50