

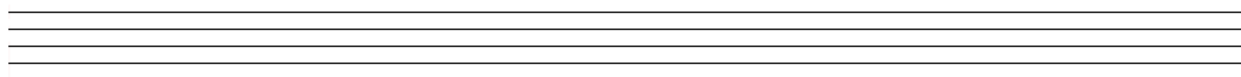
PIPING & DRUMMING QUALIFICATIONS BOARD

BAGPIPES - SCQF LEVEL 4

Time Allowed – 1 Hour

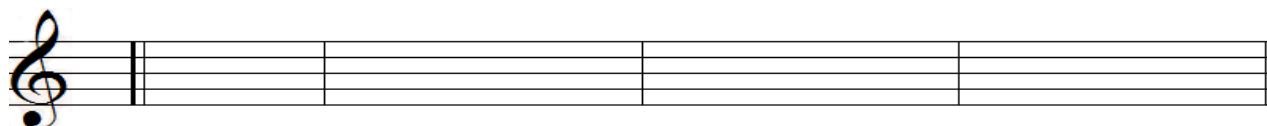
Music notation – The Unit

1. a) Explain the purpose of a Treble Clef and b) correctly draw a Treble Clef and place it accurately on the stave below



/4 Marks

2. a) Accurately place an example of a Time Signature on the stave below.



/2 Marks

- b) Explain what information a Time Signature gives the performer

/3 Marks

3. Complete the Note Value Table (Duration) below showing the relative note values to the whole note (semi breve) including rests.

Note Example	Note Name	Note Value	Rest
○	Semi Breve	1	

/20 Marks

4. How many Quavers are there in the whole note?

/1 Mark

5. Identify the time signature of the following piece of music:



/2 Marks

6. Place bar-lines in the appropriate place according to the time signature of the piece.



/4 Marks

Writing music in Simple Time – The Unit

7. On the staff below write out the first 8 bars of a simple time tune from memory that you played (Will play) in your Solo Performance. Include the tune name, style, Time Signature and correct notation including repeats where necessary:

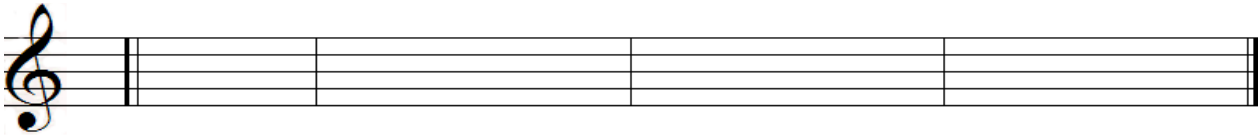
Name/Style of Tune _____



/18 Marks

8. On the staff below, write the following movements:

- (i) doubling on F from E (ii) a grip (lemluath) from High A to High A
(iii) a tachum from Low A to Low G (iv) a C doubling from Low A



/10 Marks

Having attempted/completed the 8 questions above you are now be ready to hand-in your paper. Our advice is to take time (if still available) to carefully check your answers before handing in your paper. Be confident that you have read the questions correctly and answered in an appropriate manner.

Practice Chanter maintenance - The Unit – an oral examination conducted with practical activity.

/20 Marks

TOTAL /80